

CASE REPORT

Tracheal enlargement or Mounier-Kuhn syndrome in giant cell arteritis: a possible causal association with therapeutic implications

LAURA OTILIA DAMIAN¹⁾, SIMONA MANOLE²⁾, CRISTINA ANA MARIA PAMFIL¹⁾, LILIANA ROGOJAN³⁾, SIMONA REDNIC¹⁾, ALMA AURELIA MANIU⁴⁾, MĂRIOARA POENARU⁵⁾

¹⁾Department of Rheumatology, Centre of Rare Musculoskeletal Autoimmune and Autoinflammatory Diseases, Emergency County Hospital, Cluj-Napoca, Romania

²⁾Department of Radiology, "Iuliu Hațieganu" University of Medicine and Pharmacy, Cluj-Napoca, Romania

³⁾Department of Pathology, Emergency County Hospital, Cluj-Napoca, Romania

⁴⁾Department of Otorhinolaryngology, "Iuliu Hațieganu" University of Medicine and Pharmacy, Cluj-Napoca, Romania

⁵⁾Department of Otorhinolaryngology, "Victor Babeș" University of Medicine and Pharmacy, Timișoara, Romania

Abstract

Giant cell arteritis (GCA) is a large-vessel vasculitis with rarely described respiratory initial manifestations. We report such a case presenting with hoarseness, stridor, cough and dyspnea, in which a tracheomegaly with tracheomalacia was found. No signs of relapsing polychondritis were present. The respiratory symptoms rapidly improved after glucocorticoids and Azathioprine. Tracheomegaly or Mounier-Kuhn syndrome is characterized by marked dilatation of trachea and central bronchi. The differential diagnosis and the possible relationship between tracheomegaly and GCA involving metalloproteinase-induced elastolysis are discussed. This is the first case, to our knowledge, of Mounier-Kuhn syndrome in vasculitis. The association of tracheomegaly with GCA may be underestimated, as the diagnosis is not always obvious on conventional radiographs. A tracheal enlargement finding in GCA requires monitoring to ensure early detection and prevention of spontaneous tracheal rupture. Adding a metalloproteinase inhibitor like Doxycycline to GCA therapy would be rational for the prophylaxis of complications.

Keywords: tracheomegaly, Mounier-Kuhn syndrome, giant cell arteritis, vasculitis, metalloproteinase, aneurysm.

Introduction

Tracheomegaly or Mounier-Kuhn syndrome (MKS) (also called tracheobronchomegaly, tracheal diverticulosis, or tracheocele) is a chronic, inherited or acquired disease characterized by marked dilatation of trachea and central bronchi, related to the atrophy of elastic fibers and smooth muscle [1, 2]. In the definition of tracheomegaly, sometimes the tracheal enlargement overlaps with the terms of tracheomalacia, tracheobronchomalacia and tracheobronchopathia malacia that describe the respiratory structures collapse during breathing [2]. The disease is usually diagnosed in adult males, in the third or fourth decade of life [1].

Tracheomegaly was first described in 1897 by Czyhlarz and characterized in 1932 by Mounier-Kuhn [3, 4]. Less than 400 cases have been described ever since [5]. Nevertheless, MKS may be not as uncommon, as tracheomegaly was reported in up to 16.6% of chest CTs in patients with bronchiectasia [2, 4]. The real prevalence of MKS is unknown, as it is not always symptomatic and apparent on routine chest radiographic screening [6]. The hallmark of MKS is the important dilatation of the trachea (over 3 cm) and central bronchi (over 2.4 cm right, 2.3 cm left respectively) with normal peripheral airways [1, 7].

The clinical manifestations range from frequent respiratory tract infections, sometimes with large amount of purulent sputum production, occasional hemoptysis

and progressive respiratory insufficiency, to minimal or no symptoms in some patients [6]. On conventional X-ray tracheomegaly may be overlooked [6], although an irregular, corrugated air column may be found, resulting from redundant mucosal folds between the tracheal rings [1]. During radiological examination, the tracheal size increases with Valsalva and narrows with Müller's maneuver [7]. Functional tests may detect increased tidal volume, total lung capacity and dead spaces and decreased bronchial flow speed, obstructive pathology or may be normal [8, 9]. Bronchoscopy may confirm dynamic airway collapse and diverticula [8]. Giant cell arteritis (GCA) is the most common large-vessel vasculitis. GCA may rarely manifest with respiratory symptoms. Cough in GCA, sometimes the presenting feature, usually occurs due to inflammation of various respiratory tree structures, and rarely due to aortic aneurysms compressing the trachea or great bronchi [10].

We describe a patient with a late diagnosis of tracheomegaly, of uncertain onset, in whom the persistent cough led to the diagnosis of GCA.

Case presentation

A 73-year-old, Caucasian male patient presented for dyspnea, dry cough, hoarseness, stridor and a 4 kg weight loss, not influenced by antibiotherapy (Ciprofloxacin, followed by Amoxicillin–Clavulanate). He was living in the countryside and had been formerly a mayoral clerk,

now retired. The patient was currently non-smoker, but had smoked for two years in his youth from the age of 23 to 25, about five cigarettes/day. He had no chronic cough and reportedly was previously healthy, apart from a villonodular synovitis of the third left finger operated at the age of 65. His familial history included only arterial hypertension in both parents.

The cardiology consultation with electrocardiography and echocardiography identified minor ischemic changes, but ruled out cardiac asthma. The chest X-ray and computed tomography (CT) revealed tracheomegaly (3.7 cm diameter), with a right posterior lateral wall diverticulum (Figures 1 and 2) and increased caliber of the great bronchi (2.2 cm right, 2.5 cm left). No previous chest radiographs or CTs were available, but the written conclusions of medical routine controls including chest radiography at the ages of 18, 61 and 65, respectively, had been normal. The fibrobronchoscopy revealed tracheomalacia with dynamic partial stenosis upon expiration. The laboratory tests showed inflammation [erythrocyte sedimentation rate (ESR) 52 mm/h (normal values 5–30 mm/h) and C-reactive protein (CRP) 12 mg/L (normal values 0–6 mg/L)]. The nasal and pharyngeal swabs, blood cultures, IgM for *Mycoplasma* and *Chlamydia* (enzyme-linked immunosorbent assay – ELISA) were negative, as well as the sputum examination with Ziehl–Neelsen staining and the intradermoreaction for tuberculosis. The patient received *N*-Acetylcysteine (600 mg/day) and Erdosteine (600 mg/day), associated with probiotic therapy, but the cough was only minimally influenced.

One month afterwards the patient presented to the rheumatologist for a sleep-interfering cervical pain. The physical examination revealed no significant cervical contracture, movement limitation or tender Arnold points, but instead left temporal artery sensitivity, stridor and rare rhonchi were found. No carotideal or other bruits were detected, and the arterial pressure in the hands was equal (135/60 mmHg). He had no digital clubbing. Apart from increased inflammatory markers (ESR 105 mm/h, CRP 24 mg/dL), all other laboratory test, including the screening for hepatitis B and C, human immunodeficiency virus (HIV) tests, alpha-1 antitrypsin, immunoglobulins, antinuclear and anti-neutrophil cytoplasm antibodies and complement fractions were normal.

The histopathological examination of the biopsy sample

taken from the left superficial temporal artery with Hematoxylin–Eosin (HE) staining and Orcein staining for elastin, revealed intimal thickening, fragmentation of the internal elastic lamina and mononuclear cell infiltrate with media invasion and giant cell formation in the vessel wall specimen, suggestive of GCA (Figures 3 and 4).

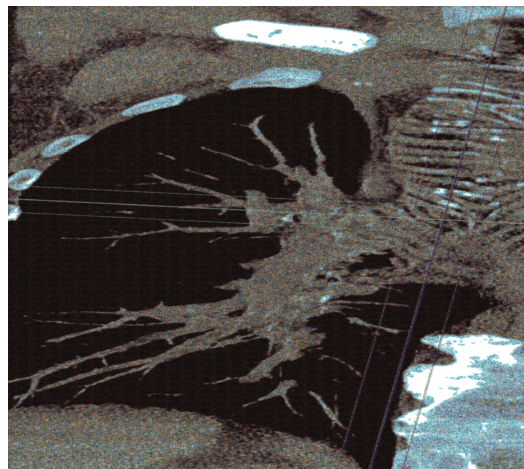


Figure 1 – Thoracic CT, pulmonary window, showing tracheomegaly (marked transversal tracheal dilatation). CT: Computed tomography.

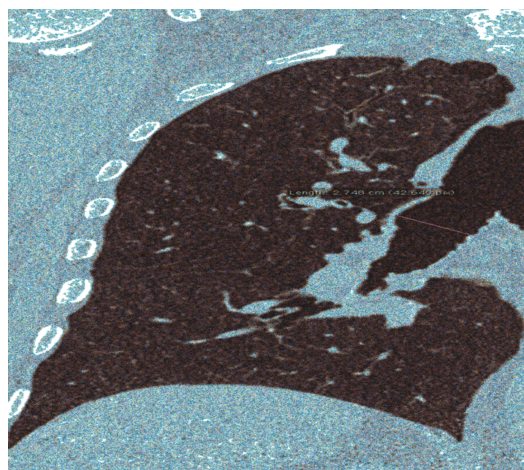


Figure 2 – Thoracic CT, pulmonary window, coronary MPR, depicting tracheomegaly (marked dilatation of trachea and bronchi). CT: Computed tomography; MPR: Multiplanar reconstruction.

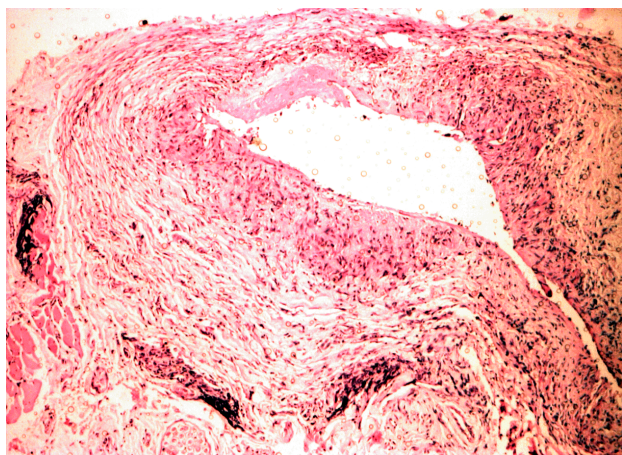


Figure 3 – Superficial temporal artery specimen, cross-section showing intimal thickening (HE staining, ×60).

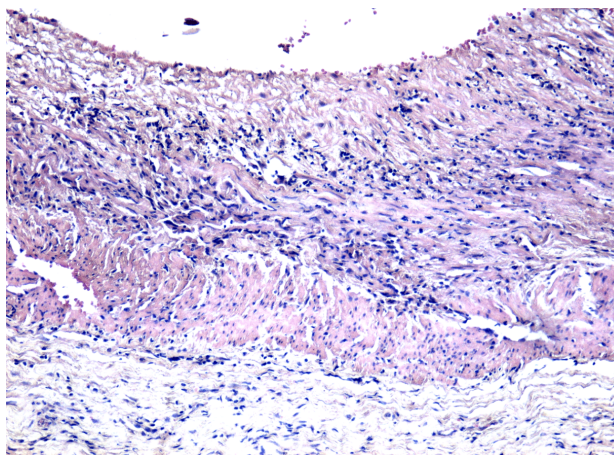


Figure 4 – Image of the artery wall, in which the mononuclear cell intimate infiltration is noted (HE staining, ×100).

An angio-magnetic resonance imaging (MRI) of the aortic cross and branches did not show thoracic aortic aneurysms or inflammation of the main vessels examined. A thorough history and clinical examination ruled out inherited connective tissue disorders or relapsing polychondritis as possible causes for tracheal enlargement. High-dose glucocorticoids (one 250 mg Methylprednisolone pulse followed by Prednisone 60 mg/day with tapering) and Azathioprine (2.5 mg/body weight) resulted in rapid improvement with disappearance of cough and stridor. At the six months control, he was asymptomatic on Azathioprine 150 mg/day, low-dose Prednisone (7.5 mg/day), along with position physiotherapy, Acetylcysteine (600 mg/day) and Doxycycline courses (200 mg/day, 10 days/month).

☞ Discussions

Tracheomegaly or MKS is the consequence of elastic fibers and smooth muscle atrophy in the trachea and main bronchi. A congenital connective tissue weakness, in combination with inhalation of irritants like air pollution and cigarette smoking, are incriminated as possible factors [3]. Inherited tracheal enlargement is secondary to connective and/or smooth muscle tissue dysplasias, such as Ehlers–Danlos syndrome, Marfan syndrome or *cutis laxa*, while the acquired form results from inflammation and elastolysis, or tracheal traction by upper lobe fibrosis [6, 11]. Tracheal enlargement may also be seen in chronic obstructive pulmonary disease, with increase of sagittal and reducing of coronal diameters (“saber-sheath trachea”) [1, 6]. In relapsing polychondritis, the tracheal enlargement from cartilaginous structures alteration typically spares the posterior tracheal membrane [1, 6]. On the contrary, in MKS the atrophy or reduction of the elastic fibers in the posterior tracheal membrane likely contribute to the tracheal collapse during inspiration [12].

An anatomic classification describes three MKS types: type 1, with slight symmetric dilation of trachea and main bronchi, type 2, with distinct tracheal dilation and diverticuli, and type 3 with diverticular and saccular structures that extend to the distal bronchi [8].

A clinical classification, based upon an extensive review of 365 cases of MKS, identifies the main etiological types. The disease developed in type 1A after fetoscopic tracheal occlusion and in type 1B after prolonged intubation in infants and children. In type 2, the disease occurred after recurrent pulmonary infections (type 2A), or pulmonary fibrosis (type 2B). Type 3 is associated with extrapulmonary elastolysis (18 patients), and in type 4 no clear predisposing factors are found [5].

The gross pathology in MKS reveals dilatation of the trachea and main bronchi, with rapid change to normal caliber at the fourth and fifth-order airways [7]. The mucosal herniation between the cartilage rings results in airway outpouchings or diverticuli, which may harbor pooled secretions. The microscopy shows atrophy or absence of elastic fibers, and thinning of the muscularis mucosa, atrophy of the longitudinal smooth muscles of the trachea and central bronchi, and sometimes the absence of the myenteric plexus of the airways [6].

In our patient, the etiology of tracheomegaly and its onset are unclear. However, he had no familial and

personal history of connective tissue diseases or chronic obstructive pulmonary disease, nor professional toxic exposure. Although he had not been smoking for 50 years, smoking could not be ruled out for sure, but was unlikely. It is possible that he had an asymptomatic and hence underdiagnosed MKS for many years, or that he developed the tracheomegaly later in life.

While some MKS cases are congenital, there is evidence accumulating in favor of an acquired etiology. Histopathological findings of localized airway smooth muscle degeneration and remodeling have been recently reported in MKS [13, 14]. In these cases, airway smooth muscles are present, and not congenitally absent, and there are regional alterations of airway smooth muscles with degeneration and fibrotic remodeling, as opposed to atrophic loss [11]. In autoimmune diseases, tracheomegaly was described in rheumatoid arthritis [15, 16], in ankylosing spondylitis [17], juvenile idiopathic arthritis and scleroderma [18]. We are not aware of other reports of tracheomegaly in vasculitis.

Tracheal vasculitis is usually associated with granulomatosis with polyangiitis and rarely with Churg–Strauss syndrome. GCA is a large-vessel vasculitis with rarely described respiratory presentation. Any segment can be involved, from respiratory airways to lung parenchyma, pleura or pulmonary vessels (Table 1).

Table 1 – Respiratory involvement in giant cell arteritis

Type of involvement	References
<i>Tracheitis</i>	Rousié <i>et al.</i> , 2004 [18]
<i>Bronchitis</i>	Siuko & Vaara, 1968 [19]; Currie <i>et al.</i> , 2008 [20]
<i>Bronchiolitis</i>	Roddy <i>et al.</i> , 2006 [21]
<i>Interstitial lung disease</i>	Karam & Fulmer, 1982 [22]; Kramer <i>et al.</i> , 1998 [23]; Clarke <i>et al.</i> , 1995 [24]; Carassou <i>et al.</i> , 2010 [25]
<i>Nodules</i>	Bradley <i>et al.</i> , 1984 [26]; Kramer <i>et al.</i> , 1998 [23]; Zenone <i>et al.</i> , 1994 [27]; Carassou <i>et al.</i> , 2010 [25]
<i>Pleuritis</i>	Romero <i>et al.</i> , 1992 [28]; Gur <i>et al.</i> , 1996 [29]; Colnot, 1996 [30]; Valstar <i>et al.</i> , 2003 [31]; Kechaou <i>et al.</i> , 2008 [32]
<i>Pulmonary arteritis</i>	Wagenaar <i>et al.</i> , 1981 [33]; Glover <i>et al.</i> , 1987 [34]; Doyle <i>et al.</i> , 1988 [35]; Feng <i>et al.</i> , 2004 [36]
<i>Pulmonary thromboembolism</i>	Radhamanohar, 1991 [37]; Chassagne <i>et al.</i> , 1995 [38]; Beynel <i>et al.</i> , 1997 [39]; Landrin <i>et al.</i> , 1997 [40]; Andrès <i>et al.</i> , 2004 [41]
<i>Aortic aneurysm compressing the trachea or bronchiae</i>	Dennison <i>et al.</i> , 1985 [42]
<i>Alveolar hemorrhage</i>	Garrouste <i>et al.</i> , 2008 [43]

In our case, the angioMRI failed to demonstrate inflammation of the tracheal arterial supply or the presence of aortic aneurysms. Nevertheless, tracheal involvement in GCA may be infraclinical; spontaneous tracheal rupture during cough was reported in a longstanding case [44]. Glucocorticoids, as frequently required in vasculitis, were also incriminated in tracheal rupture [44].

A potential link between MKS and GCA may concern elastin damage by matrix metalloproteinases (MMPs), involved in vascular inflammation and tissue remodeling [44]. In support of this hypothesis, a recent report in a patient with lung transplantation for MKS revealed no

genetic alterations in the explanted bronchi, but diffuse inflammation with strong reduction in the elastic fibers and increased expression of MMP-1, -2 and -9 [14]. The human tracheal smooth muscle cells, critically involved in remodeling, express MMP-9 during inflammation that contributes to extracellular matrix degradation [45]. Of note, extra-pulmonary elastolysis was involved in almost 5% of MKS cases, in a recent extensive review [5]. Moreover, a MKS patient with elastolysis also had a mildly dilated aortic root [5].

In GCA, the balance between MMP and their natural inhibitors-tissue inhibitors of metalloproteinases (TIMPs), favors proteolytic activity, and elevated MMP-2 and MMP-9 contribute to aneurysm formation through facilitating leukocyte access across the vessel wall and rupture of internal elastic lamina [46]. Moreover, the elastin degraded by MMP-secreting macrophages triggers an immune response [46]. Therefore, a similar inflammatory etiology of tracheomegaly in GCA, although speculative, is not unlikely.

Our patient did not have concomitant thoracic aortic aneurysms. Possible explanations could be the regional variations in matrix structure or MMPs regulation, or other factors related to immune and/or vascular aging. Although an asymptomatic prior tracheal enlargement cannot be ruled out, the sudden and late respiratory symptoms point to an acquired etiology, presumably inflammatory in GCA. The rapid resolution of cough and dyspnea was most likely due to reversible inflammation of the smaller bronchial vessels.

Therapy in tracheomegaly consists in position physiotherapy for clearing secretions, antibiotics and rarely airway stenting and tracheoplasty [6]. Moreover, MMP inhibition, for instance with Doxycycline, a non-specific proteinase inhibitor, along with antibacterial effects, may limit the aortic and airway remodeling [47–49].

Conclusions

The association of tracheomegaly with GCA may be underestimated, as tracheal enlargement is not always obvious on conventional radiographs. A tracheal enlargement in GCA requires monitoring for early detection of a spontaneous tracheal rupture, mainly in the setting of long-term glucocorticoids. Supplementing the GCA treatment with a metalloproteinase inhibitor like Doxycycline could prove rational for the prophylaxis of complications.

Conflict of interests

The authors declare that they have no conflict of interests.

Declaration of patient consent

The authors certify that the patient has given the informed consent for publication of clinical information, including that of images, with efforts to preserve his anonymity.

References

- [1] Tomashefsky JF Jr, Dail DH. Aspiration, bronchial obstruction, bronchiectasia, and related disorders. In: Tomashefsky JF (ed). Dail and Hammar's pulmonary pathology. Vol. I: Non-neoplastic lung disease. 3rd edition, Springer-Verlag, New York, 2009, 118–119.
- [2] Abdelghani A, Bouazra H, Hayouni A, Slama S, Garrouche A, Mezghani S, Klabi N, Benzarti M. Mounier-Kuhn syndrome: a rare cause of bronchial dilation: a case report. *Respir Med* CME, 2009, 2(4):164–166.
- [3] Menon B, Aggarwal B, Iqbal A. Mounier-Kuhn syndrome: report of 8 cases of tracheobronchomegaly with associated complications. *South Med J*, 2008, 101(1):83–87.
- [4] Abdallah EG, Ashton RW. Mounier-Kuhn syndrome: overcoming a lack of recognition. *South Med J*, 2008, 101(1):14–15.
- [5] Payandeh J, McGillivray B, McCauley G, Wilcox P, Swiston JR, Lehman A. A clinical classification scheme for tracheobronchomegaly (Mounier-Kuhn syndrome). *Lung*, 2015, 193(5):815–822.
- [6] Krustins E, Kravale Z, Buls A. Mounier-Kuhn syndrome or congenital tracheobronchomegaly: a literature review. *Respir Med*, 2013, 107(12):1822–1828.
- [7] Herring W. Learning radiology. Recognizing the basics. 3rd edition, Elsevier-Saunders, 2015.
- [8] Schwartz M, Rossoff L. Tracheobronchomegaly. *Chest*, 1994, 106(5):1589–1590.
- [9] Celik B, Bilgin S, Yuksel K. Mounier-Kuhn syndrome: a rare cause of bronchial dilation. *Tex Heart Inst J*, 2011, 38(2):194–196.
- [10] Imran TF, Helfgott S. Respiratory and otolaryngologic manifestations of giant cell arteritis. *Clin Exp Rheumatol*, 2015, 33(2 Suppl 89):S164–S170.
- [11] Cook DP, Adam RJ, Abou Alaiwa MH, Eberlein M, Klesney-Tait JA, Parekh KR, Meyerholz DK, Stoltz DA. Mounier-Kuhn syndrome: a case of tracheal smooth muscle remodeling. *Clin Case Rep*, 2017, 5(2):93–96.
- [12] Murgu SD, Colt HG. Tracheobronchomalacia and excessive dynamic airway collapse. *Respirology*, 2006, 11(4):388–406.
- [13] Mitterbauer A, Hoetzenecker K, Birner P, Mildner M, Prosch H, Streubel B, Taghavi S, Klepetko W, Ankersmit HJ. Clinical-radiological, histological and genetic analyses in a lung transplant recipient with Mounier-Kuhn syndrome and end-stage chronic obstructive pulmonary disease. *Clin Respir J*, 2015, 9(3):375–379.
- [14] Celenk C, Celenk P, Selçuk MB, Ozyazici B, Kuru O. Tracheomegaly in association with rheumatoid arthritis. *Eur Radiol*, 2000, 10(11):1792–1794.
- [15] Rúa Marín C, Betancur JSD, Cardona A, Gómez LAR. Traqueomegalia y artritis reumatoide. *Rev Colomb Reumatol*, 2008, 15(3):207–209.
- [16] Padley S, Varma N, Flower CD. Tracheobronchomegaly in association with ankylosing spondylitis. *Clin Radiol*, 1991, 43(2):139–141.
- [17] Sailer S, Osona B, Peña-Zarza JA, Gil-Sanchez JA, Lacruz-Perez L, Mulet JF. Coincidence of tracheobronchomegaly (Mounier-Kuhn syndrome) and juvenile idiopathic arthritis. *Klin Padiatr*, 2015, 227(5):290–292.
- [18] Rousié C, Van Damme H, Radermecker MA, Reginster P, Tecqmenne C, Limet R. Spontaneous tracheal rupture: a case report. *Acta Chir Belg*, 2004, 104(2):204–208.
- [19] Siuko H, Vaara J. [Bronchitis as a presymptom of giant cell arteritis]. *Duodecim*, 1968, 84(9):612–615.
- [20] Currie C, Molcho M, Boyce W, Holstein B, Torsheim T, Richter M. Researching health inequalities in adolescents: the development of the Health Behavior in School-Aged Children (HBSC) family affluence scale. *Soc Sci Med*, 2008, 66(6):1429–1436.
- [21] Roddy E, Summers G, Chaudry Z, Bateman R. Follicular bronchiolitis, an unusual cause of haemoptysis in giant cell arteritis. *Clin Rheumatol*, 2006, 25(3):433–435.
- [22] Karam GH, Fulmer JD. Giant cell arteritis presenting as interstitial lung disease. *Chest*, 1982, 82(6):781–784.
- [23] Kramer MR, Berkman N, Mintz B, Godfrey S, Saute M, Amir G. The role of open lung biopsy in the management and outcome of patients with diffuse lung disease. *Ann Thorac Surg*, 1998, 65(1):198–202.
- [24] Clarke JP, Roge JC, Sagan C, De Lajartre AY, Chailleux E. [Horton disease of pulmonary localization]. *Rev Pneumol Clin*, 1995, 51(5):291–293.
- [25] Carassou P, Aletti M, Cinquetti G, Banal F, Landais C, Raffin B, Carli P. [Respiratory manifestations of giant cell arteritis: 8 cases and review of the literature]. *Presse Med*, 2010, 39(9):e188–e196.

- [26] Bradley JD, Pinals RS, Blumenfeld HB, Poston WM. Giant cell arteritis with pulmonary nodules. *Am J Med*, 1984, 77(1): 135–140.
- [27] Zenone T, Souquet PJ, Bohas C, Vital Durand D, Bernard JP. Unusual manifestations of giant cell arteritis: pulmonary nodules, cough, conjunctivitis and otitis with deafness. *Eur Respir J*, 1994, 7(12):2252–2254.
- [28] Romero S, Vela P, Padilla I, Rosas J, Martín C, Aranda I. Pleural effusion as manifestation of temporal arteritis. *Thorax*, 1992, 47(5):398–399.
- [29] Gur H, Ehrenfeld M, Izsak E. Pleural effusion as a presenting manifestation of giant cell arteritis. *Clin Rheumatol*, 1996, 15(2):200–203.
- [30] Colnot F. [Pleurisy disclosing Horton's disease]. *Rev Med Interne*, 1996, 17(5):430–431.
- [31] Valstar MH, Terpstra WF, de Jong RS. Pericardial and pleural effusion in giant cell arteritis. *Am J Med*, 2003, 114(8):708–709.
- [32] Kechaou M, Frigui M, Marzouk S, Jallouli M, Frikha F, Kaddour N, Boudawara T, Bahloul Z. [Pleural effusion revealing Horton's disease]. *Rev Med Liege*, 2008, 63(11):650–653.
- [33] Wagenaar SS, Westermann CJ, Corrin B. Giant cell arteritis limited to large elastic pulmonary arteries. *Thorax*, 1981, 36(11):876–877.
- [34] Glover MU, Muñoz J, Bessone L, Carta M, Casellas J, Maniscalco BS. Pulmonary artery obstruction due to giant cell arteritis. *Chest*, 1987, 91(6):924–925.
- [35] Doyle L, McWilliam L, Hasleton PS. Giant cell arteritis with pulmonary involvement. *Br J Dis Chest*, 1988, 82(1):88–92.
- [36] Feng RE, Liu HR, Zhao DC, Yang N. [Isolated pulmonary giant cell arteritis: a case report and literature review]. *Zhonghua Jie He He Hu Xi Za Zhi*, 2004, 27(2):105–107.
- [37] Radhamanohar M. Multiple pulmonary infarctions caused by giant cell arteritis. *Postgrad Med J*, 1991, 67(787):491.
- [38] Chassagne P, Gligorov J, Dominique S. Pulmonary artery obstruction and giant cell arteritis. *Ann Intern Med*, 1995, 122(9):732.
- [39] Beynel P, Guigay J, Vauterin G. [Chronic cor pulmonale after embolism, antiphospholipid syndrome, Horton disease: therapeutic approach apropos of a case]. *Rev Pneumol Clin*, 1997, 53(3):162–166.
- [40] Landrin I, Chassagne P, Bouaniche M, Dominique S, Doucet J, Nouvet G, Bercoff E. Pulmonary artery thrombosis in giant cell arteritis. A new case and review of literature. *Ann Med Interne (Paris)*, 1997, 148(4):315–316.
- [41] Andrès E, Kaltenbach G, Marcellin L, Imier M. [Acute pulmonary embolism related to pulmonary giant cell arteritis]. *Presse Med*, 2004, 33(19 Pt 1):1328–1329.
- [42] Dennison AR, Watkins RM, Gunning AJ. Simultaneous aortic and pulmonary artery aneurysms due to giant cell arteritis. *Thorax*, 1985, 40(2):156–157.
- [43] Garrouste C, Sailer L, Astudillo L, Lavayssière L, Cointault O, Borel C, Bernard J, Arlet P. [Fulminant alveolar hemorrhage: evolution of giant cell arteritis to ANCA-positive vasculitis?] *Rev Med Interne*, 2008, 29(3):232–235.
- [44] Lee CW, Lin CC, Lin WN, Liang KC, Luo SF, Wu CB, Wang SW, Yang CM. TNF-alpha induces MMP-9 expression via activation of Src/EGFR, PDGFR/PI3K/Akt cascade and promotion of NF-kappaB/p300 binding in human tracheal smooth muscle cells. *Am J Physiol Lung Cell Mol Physiol*, 2007, 292(3): L799–L812.
- [45] Segarra M, García-Martínez A, Sánchez M, Hernández-Rodríguez J, Lozano E, Grau JM, Cid MC. Gelatinase expression and proteolytic activity in giant-cell arteritis. *Ann Rheum Dis*, 2007, 66(11):1429–1435.
- [46] Gillot JM, Masy E, Davril M, Hachulla E, Hatron PY, Devulder B, Dessaint JP. Elastase derived elastin peptides: putative autoimmune targets in giant cell arteritis. *J Rheumatol*, 1997, 24(4):677–682.
- [47] Lindeman JHN, Abdul-Hussien H, van Bockel JH, Wolterbeek R, Kleemann R. Clinical trial of doxycycline for matrix metalloproteinase-9 inhibition in patients with an abdominal aneurysm: doxycycline selectively depletes aortic wall neutrophils and cytotoxic T cells. *Circulation*, 2009, 119(16):2209–2216.
- [48] Bhattacharyya P, Saha D, Bhattacharjee P, Paul R, Dey R, Ghosh M. Long-term doxycycline and lung function in chronic obstructive pulmonary disease: a pilot observation. *Lung India*, 2014, 31(3):306–307.
- [49] Goanță CM, Cîrpașiu D, Tusaliu M, Georgescu M, Dițu LM, Budu VA. Probiotics as a therapeutic option to reduce the duration of upper respiratory tract infections in children. *Rom Biotechnol Lett*, 2017, 22(2):12329–12333.

Corresponding author

Alma Aurelia Maniu, Associate Professor, MD, PhD, Department of Otorhinolaryngology, "Iuliu Hațieganu" University of Medicine and Pharmacy, 4–6 Clinicilor Street, 400006 Cluj-Napoca, Romania; Phone +40755–044 632, Fax +40264–590 226, e-mail: almacjro@yahoo.com

Received: January 8, 2018

Accepted: August 29, 2018